

OWEN'S COMMERCIAL SUBDIVISION

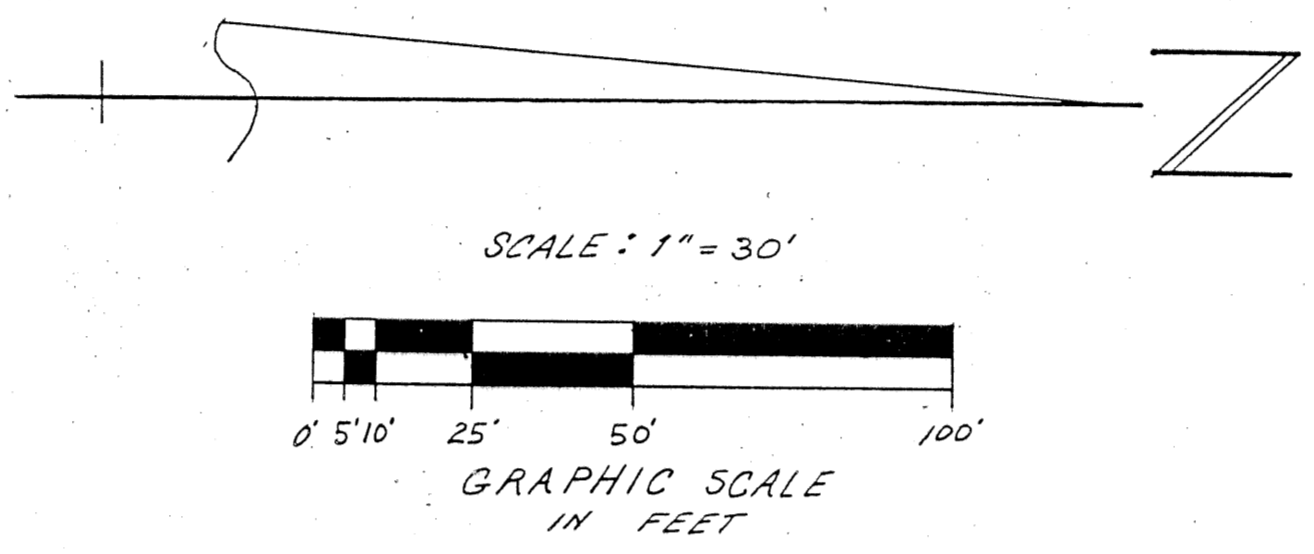
A REPLAT OF A PORTION OF TRACT 34 AND TRACT 36, MODEL LAND COMPANY'S SUBDIVISION, A SUBDIVISION AS RECORDED IN PLAT BOOK 6, PAGE 51, IN THE PUBLIC RECORDS OF PALM BEACH COUNTY, FLORIDA.

CITY OF DELRAY BEACH
SECTION 18, TOWNSHIP 46 SOUTH, RANGE 43 EAST, PALM BEACH COUNTY, FLORIDA.
SHEET 2 OF 2
JULY 20, 1994

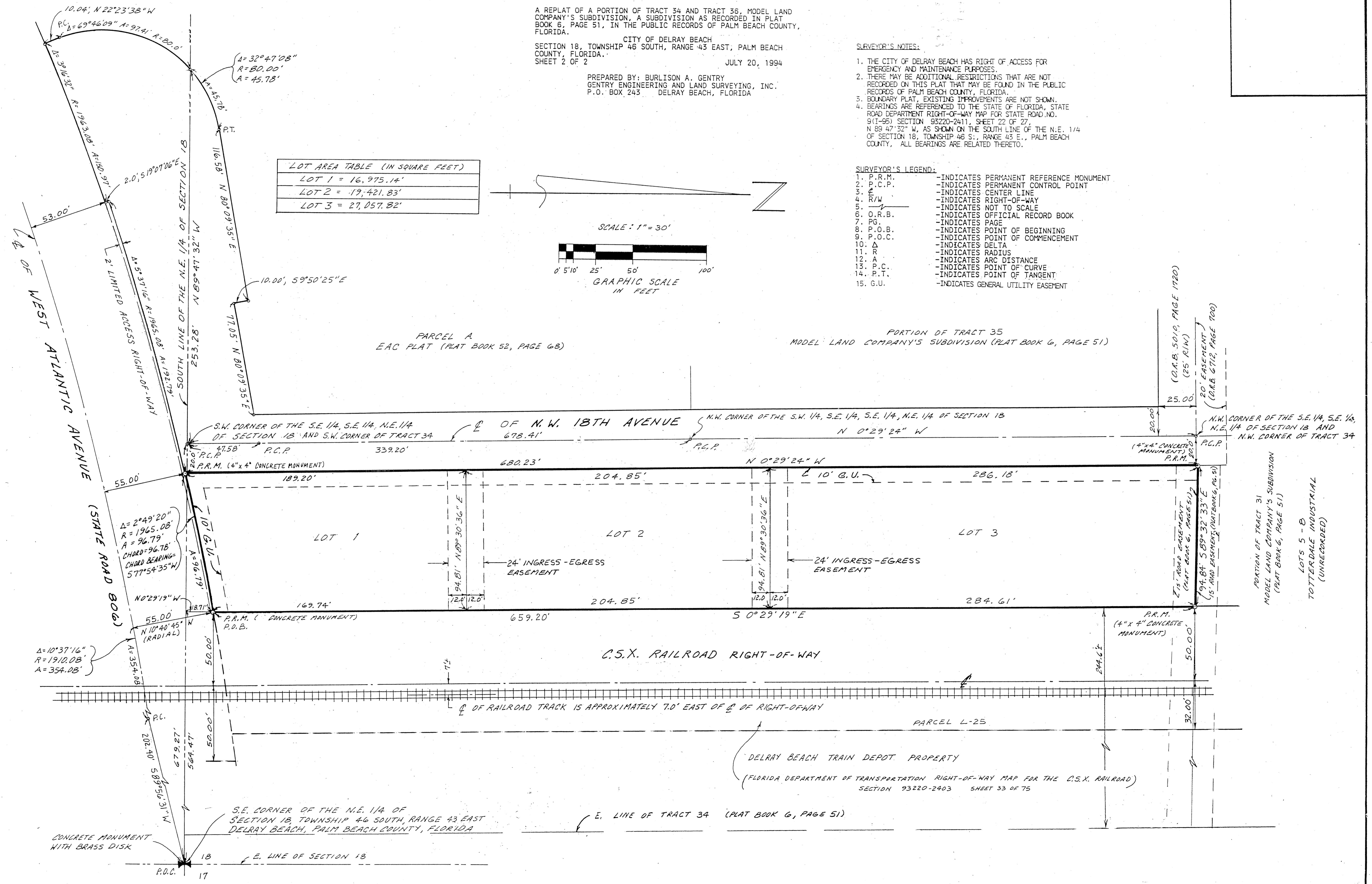
PREPARED BY: BURLISON A. GENTRY
GENTRY ENGINEERING AND LAND SURVEYING, INC.
P.O. BOX 243 DELRAY BEACH, FLORIDA

- SURVEYOR'S NOTES:**
1. THE CITY OF DELRAY BEACH HAS RIGHT OF ACCESS FOR EMERGENCY AND MAINTENANCE PURPOSES.
 2. THERE MAY BE ADDITIONAL RESTRICTIONS THAT ARE NOT RECORDED ON THIS PLAT THAT MAY BE FOUND IN THE PUBLIC RECORDS OF PALM BEACH COUNTY, FLORIDA.
 3. BOUNDARY PLAT, EXISTING IMPROVEMENTS ARE NOT SHOWN.
 4. BEARINGS ARE REFERENCED TO THE STATE OF FLORIDA, STATE ROAD DEPARTMENT RIGHT-OF-WAY MAP FOR STATE ROAD NO. 9 (1-95) SECTION 93220-2411, SHEET 22 OF 27, N 89° 47' 32" W, AS SHOWN ON THE SOUTH LINE OF THE N.E. 1/4 OF SECTION 18, TOWNSHIP 46 S., RANGE 43 E., PALM BEACH COUNTY, ALL BEARINGS ARE RELATED THERETO.

LOT AREA TABLE (IN SQUARE FEET)	
LOT 1	= 16,975.14'
LOT 2	= 19,421.83'
LOT 3	= 27,057.82'



- SURVEYOR'S LEGEND:**
1. P.R.M. - INDICATES PERMANENT REFERENCE MONUMENT
 2. P.C.P. - INDICATES PERMANENT CONTROL POINT
 3. C.L. - INDICATES CENTER LINE
 4. R/W - INDICATES RIGHT-OF-WAY
 5. - INDICATES NOT TO SCALE
 6. O.R.B. - INDICATES OFFICIAL RECORD BOOK
 7. PG. - INDICATES PAGE
 8. P.O.B. - INDICATES POINT OF BEGINNING
 9. P.O.C. - INDICATES POINT OF COMMENCEMENT
 10. Δ - INDICATES DELTA
 11. R - INDICATES RADIUS
 12. A - INDICATES ARC DISTANCE
 13. P.C. - INDICATES POINT OF CURVE
 14. P.T. - INDICATES POINT OF TANGENT
 15. G.U. - INDICATES GENERAL UTILITY EASEMENT



TRACT 36
MODEL LAND COMPANY'S SUBDIVISION
(PLAT BOOK 6, PAGE 51)

PARCEL A
EAC PLAT (PLAT BOOK 52, PAGE 68)

PORTION OF TRACT 35
MODEL LAND COMPANY'S SUBDIVISION (PLAT BOOK 6, PAGE 51)

(O.R.B. 5010, PAGE 1720)
(25' R/W)

(20' EASEMENT)
(O.R.B. 6712, PAGE 700)

N.W. CORNER OF THE S.E. 1/4, S.E. 1/4, N.E. 1/4 OF SECTION 18 AND N.W. CORNER OF TRACT 34

PARCELS OF TRACT 31
MODEL LAND COMPANY'S SUBDIVISION
(PLAT BOOK 6, PAGE 51)

LOTS 5 - 8
TOTTERDALE INDUSTRIAL
(UNRECORDED)

SUBDIVISION: Owen's Commercial
BOOK: 74
PAGE: 131
FLOOD ZONE: -
FLOOD MAP: -
QUAD: -
SE: -
ZIP CODE: -
PUD NAME: Delray Bch

CONCRETE MONUMENT WITH BRASS DISK

S.E. CORNER OF THE N.E. 1/4 OF SECTION 18, TOWNSHIP 46 SOUTH, RANGE 43 EAST DELRAY BEACH, PALM BEACH COUNTY, FLORIDA

DELRAY BEACH TRAIN DEPOT PROPERTY
(FLORIDA DEPARTMENT OF TRANSPORTATION RIGHT-OF-WAY MAP FOR THE C.S.X. RAILROAD)
SECTION 93220-2403 SHEET 33 OF 75

E. LINE OF TRACT 34 (PLAT BOOK 6, PAGE 51)